



åke

A modern personal lift

Swedish Åke is a unique, patented lift for ergonomic handling of goods, designed and manufactured in Sweden. The goods are placed onto the lift and then stored in racks with minimal manual handling. The operating height is always right for staff, whether loading or unloading and whether hoisted or lowered.

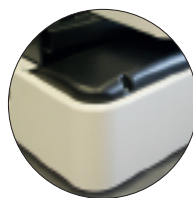
The lift accommodates one person and up to 100 kg of goods. It lifts up to 4.6 metres and can be safely driven forward and backwards in the fully hoisted position. The automatic up/down function of the lift table ensures constantly optimal ergonomics, whether carrying goods on one or both lift trays. Swedish Åke is easy to manoeuvre and can be used in aisles that are only 80 cm wide. The unit is controlled by a single joystick.

The lift is connected to a standard electrical socket for charging at the end of the working day.



Safety

We thought of your safety when we developed the lift. For this it passed extensive safety-related tests. The speed of the lift can be regulated, so you always have control over it and thanks the chassis and wheel construction all clamping risks are excluded.



Flexibility

We know that the premises you use are often restricted. That is why we have developed a lift with direct driven electric motors so that it can be driven by you at low speed under full control. The dimensions and weight of the lift are adapted to standard doorways and passenger lifts in buildings, so that they can be passed or driven on. This allows you to maximize the possibilities of the lift in order to meet all conceivable requirements in the different premises, floors and within a building may occur to meet.



Quality

The lift is produced in Sweden as well as all associated components for the control and the quality assurance. The lift is built for operating from morning to night and every component is carefully designed and selected based on these tests.



åke

A modern personal lift

| | |
|--|--|
| Chassis size: | 1290x780 mm |
| Platform size: | 600x450 mm |
| Load tray size | 700x480 |
| Number of load trays | 2 pcs |
| Max. load: | 220 kg |
| Number of people on platform: | 1 |
| Transport height: | 1950 mm |
| Lifting height/Working height: | 2,95/5,10 m |
| Lifting speed up to 2,95 m | 11 s |
| Driving speed lowered / raised platform: | 4,5 km/h / 1 km/h |
| Power source: | Battery 70Ah C20 (up to 220 Ah optional) |
| System voltage: | 24 V |
| Charger: | 24 V/11 A, 230 V 50 Hz/60 Hz |
| Drive: | DC Motors, 2 x 500 W |
| Height of platform railing: | 1100 mm |